



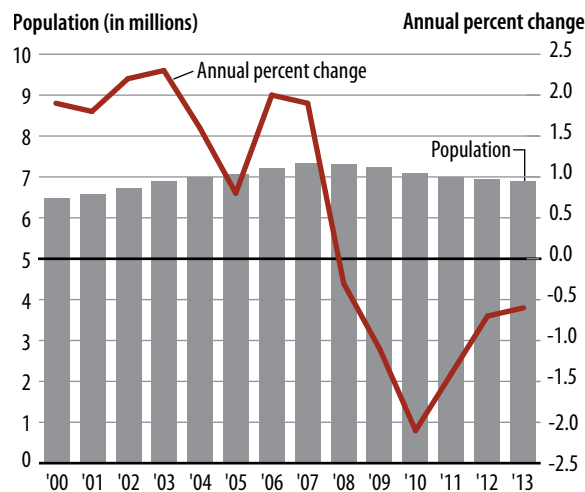
Correctional Populations in the United States, 2013

Lauren E. Glaze and Danielle Kaebler, *BJS Statisticians*

An estimated 6,899,000 persons were under the supervision of adult correctional systems at yearend 2013, down from 6,940,500 at yearend 2012 (**figure 1**). The decrease of 41,500 offenders in 2013 resulted in the number of persons under correctional supervision falling below 6.9 million for the first time since 2003. The decline in the population during 2013 (down 0.6%) was less than 1% for the second consecutive year, down from 2.1% in 2010 when the fastest annual decline in the population was observed. About 1 in 35 adults in the United States was under some form of correctional supervision at yearend 2013. This rate was unchanged from 2012, when it dropped to the lowest rate observed since 1997.

This report summarizes data from several Bureau of Justice Statistics (BJS) correctional data collections to provide statistics on the total population supervised by adult correctional systems in the United States. (See *Methodology* for sources.) These systems include offenders living in the community while supervised by probation or parole agencies and those under the jurisdiction of state or federal prisons or held in local jails.

FIGURE 1
Total population under the supervision of adult correctional systems and annual percent change, 2000–2013



Note: Estimates were rounded to the nearest 100. Estimates may not be comparable to previously published BJS reports because of updated information or changes in methods. Includes estimates for nonresponding jurisdictions. See *Methodology*.

Source: Bureau of Justice Statistics, Annual Surveys of Probation and Parole, Annual Survey of Jails, Census of Jail Inmates, and National Prisoner Statistics Program, 2000–2013.

HIGHLIGHTS

- An estimated 6,899,000 persons were under the supervision of adult correctional systems at yearend 2013, a decline of about 41,500 from yearend 2012.
- The correctional population declined 0.6% during 2013, down from 2.1% in 2010 when the fastest annual decline in the population was observed.
- About 1 in 35 adults (2.8%) in the United States was under some form of correctional supervision at yearend 2013, unchanged from 2012.
- For the second consecutive year, the community supervision (down 0.6%) and incarcerated (down 0.5%) populations declined by less than 1%.
- About 1 in 51 adults was on probation or parole at yearend 2013, compared to 1 in 110 adults incarcerated in prison or local jail.
- All of the decline in the correctional population during 2013 resulted from decreases in the probation (down 32,100) and local jail (down 13,300) populations.
- While the U.S. prison population increased during 2013 (up 4,300 prisoners), the federal prison population (down 1,900) decreased for the first time since 1980.
- Since 2010, the female jail population has been the fastest growing correctional population, increasing by an average of 3.4% annually.

During 2013, the community supervision and incarcerated populations declined by less than 1%

The 41,500 decline in the correctional population during 2013 was attributed to decreases in both the community supervision and incarcerated populations.¹ An estimated 4,751,400 persons were on probation or parole at the end of 2013, representing about 7 in 10 offenders under correctional supervision (table 1).² (See appendix table 1 for correctional population estimates by jurisdiction.)

During 2013, the number of persons under community supervision fell by 29,900, accounting for the majority

¹Because offenders with multiple correctional statuses are excluded from the total correctional population to avoid double counting offenders, the sum of the community supervision and incarcerated populations and the change in the populations will not equal the total correctional population. See table 6 and *Methodology*.

²The total community supervision population excludes parolees who were also on probation to avoid double counting offenders. See table 6 and *Methodology*.

of the decline in the total correctional population. For the second consecutive year, the community supervision population decreased by less than 1%. The rate of decline in the community supervision population slowed between 2010 (down 2.6%) and 2012 (down 0.7%). During 2013 (down 0.6%), the community supervision population declined at rate that was relatively unchanged from the previous year.

Similar to the community supervision population, the number of inmates in state and federal prisons and local jails dropped between 2012 (2,231,400) and 2013 (2,220,300).³ The decrease of 11,100 inmates during the year was the smallest decrease in the incarcerated population since it first declined in 2009 (down 12,600). During 2011, the population decreased by 1.2%, the fastest annual rate of decline since 2009.

³The total incarcerated population excludes prisoners who were held in a local jail to avoid double counting inmates. See table 6 and *Methodology*.

Since 2011, the rate of decline in the population slowed slightly, from 0.9% in 2012 to 0.5% in 2013.

About 8 in 10 offenders under community supervision at yearend 2013 were on probation (3,910,600), compared to about 2 in 10 on parole (853,200). All of the decrease in the community supervision population during 2013 was attributed to the decline in the probation population (down 0.8% or 32,100). The small increase in the number of parolees (up 0.2% or 2,100) partially offset the decrease in the community supervision population during the year.

At yearend 2013, about 70% of the incarcerated population was under the jurisdiction of state or federal prisons (1,574,700), compared to 30% held in local jails (731,200). However, the decrease in the number of local jail inmates (down 1.8% or 13,300) during 2013 accounted for all of the decline in the incarcerated population.

TABLE 1
Estimated number of persons supervised by adult correctional systems, by correctional status, 2000, 2005, and 2010–2013

Year	Total correctional population ^a	Community supervision			Incarcerated ^b		
		Total ^{a,c}	Probation	Parole	Total ^a	Local jail	Prison
2000	6,467,900	4,565,100	3,839,500	725,500	1,945,400	621,100	1,394,200
2005	7,055,800	4,946,800	4,162,500	784,400	2,200,400	747,500	1,525,900
2010	7,088,500	4,887,900	4,055,500	840,700	2,279,100	748,700	1,613,800
2011	6,990,400	4,814,200	3,971,300	853,900	2,252,500	735,600	1,599,000
2012	6,940,500	4,781,300	3,942,800	851,200	2,231,400	744,500	1,570,400
2013	6,899,000	4,751,400	3,910,600	853,200	2,220,300	731,200	1,574,700
Average annual percent change, 2000–2012	0.6%	0.4%	0.2%	1.3%	1.1%	1.5%	1.0%
Percent change, 2012–2013	-0.6%	-0.6%	-0.8%	0.2%	-0.5%	-1.8%	0.3%

Note: Estimates were rounded to the nearest 100 and may not be comparable to previously published BJS reports due to updated information or rounding. Counts include estimates for nonresponding jurisdictions. All probation, parole, and prison counts are for December 31; jail counts are for the last weekday in June. Detail may not sum to total due to rounding and adjustments made to account for offenders with multiple correctional statuses. See *Methodology*.

^aTotal was adjusted to account for offenders with multiple correctional statuses. See *Methodology*.

^bIncludes inmates held in local jails or under the jurisdiction of state or federal prisons.

^cIncludes some offenders held in a prison or jail but who remained under the jurisdiction of a probation or parole agency.

Source: Bureau of Justice Statistics, Annual Surveys of Probation and Parole, Annual Survey of Jails, Census of Jail Inmates, and National Prisoner Statistics Program, 2000, 2005, and 2010–2013.

Between 2012 and 2013, the U.S. prison population grew by 0.3% (4,300 prisoners), reversing a 3-year trend of decreases in the population (table 1). All of the increase in the U.S. prison population was attributed to the increase in the number of inmates under the jurisdiction of state prisons (up 0.5% or 6,300). The growth in the U.S. prison population during 2013 masked the first decline in the number of inmates under the jurisdiction of the Federal Bureau of Prisons (down 0.9% or 1,900) since 1980.⁴

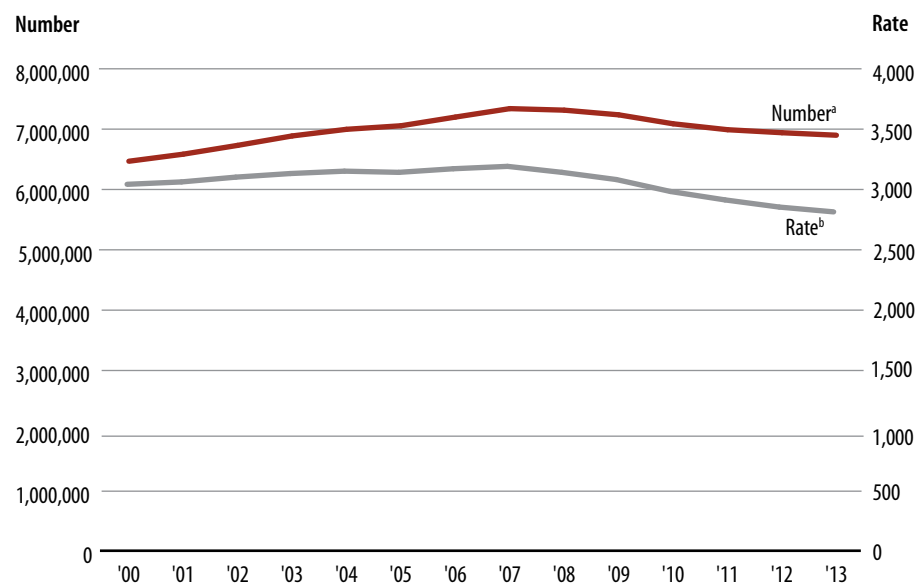
Correctional supervision rate dropped during 2013, continuing a 6-year trend

By yearend 2013, the correctional supervision rate declined to 2,830 per 100,000 U.S. adult residents from 2,870 per 100,000 at yearend 2012 (figure 2). The correctional supervision rate trended downward over the past 6 years, after reaching a peak of 3,210 per 100,000 adults in 2007. However, the decline during 2013 (down 1.5%) was less than the average annual decrease of 2.2% between 2007 and 2012.

Since the correctional population first declined during 2008, the trend in the correctional supervision rate diverged from the trend in the number of persons under correctional supervision. Compared to the decrease in the number of offenders under correctional supervision, the correctional supervision rate declined

⁴See *Prisoners in 2013* (NCJ247282, BJS web, September 2014) for more information on the prison population.

FIGURE 2
Estimated number and rate of persons supervised by adult correctional systems, 2000–2013



Note: Counts were rounded to the nearest 100 and rates were rounded to the nearest 10. Estimates may not be comparable to previously published BJS reports due to updated information or rounding. Counts include estimates for nonresponding jurisdictions. See *Methodology*.

^aTotal was adjusted to account for offenders with multiple correctional statuses. See *Methodology*.

^bRates were computed using the U.S. adult resident population estimates from the U.S. Census Bureau for January 1 of the following year.

Source: Bureau of Justice Statistics, Annual Surveys of Probation and Parole, Annual Survey of Jails, Census of Jail Inmates, and National Prisoner Statistics Program, 2000–2013. The adult resident population estimates are based on the U.S. Census Bureau, National Intercensal Estimates, 2000–2012, and unpublished adult resident population estimates on January 1, 2013, and January 1, 2014.

more rapidly. The number of persons supervised by adult correctional systems decreased by an average of 1.0% each year from yearend 2007 to yearend 2013. In comparison, the average annual decline in the correctional supervision rate (down 2.1%) was twice as fast

during the period. However, half of the decrease in the correctional supervision rate since 2007 was attributed to the increase in the size of the U.S. adult resident population.⁵

⁵See *Methodology* for more information about the method used to decompose the decline in the correctional supervision rate.

The rate of offenders under community supervision declined between 2012 and 2013, from 1,980 per 100,000 adults to 1,950 per 100,000. (table 2). Since peaking at 2,240 per 100,000 adults in 2007, the community supervision rate trended downward, accounting for three-quarters of the decline in the correctional supervision rate from 2007 to 2013. By yearend 2013, the incarceration rate also dropped slightly, to 910 per 100,000 adults from 920

per 100,000 at yearend 2012. Since 2008 (1,000 per 100,000 adults), the incarceration rate declined steadily.

Decreases in the probation and jail populations accounted for the decline in the correctional population during 2013

Although the correctional population continued to decline between 2010 and 2013, the composition of the

correctional population remained unchanged. Probationers accounted for the majority (57%) of offenders under correctional supervision in 2010 and 2013, and prisoners (23%) made up almost a quarter of the population (table 3). Parolees and local jail inmates represented the smallest and equal shares of the correctional population in 2010 and 2013 (12% parolees and 11% jail inmates).

TABLE 2
U.S. adult residents supervised by adult correctional systems, 2000, and 2005–2013

Year	Total correctional population ^a		Community supervision population		Incarcerated population ^b	
	Number supervised per 100,000 U.S. adult residents ^c	U.S. adult residents under correctional supervision	Number on probation or parole per 100,000 U.S. adult residents ^c	U.S. adult residents on probation or parole	Number incarcerated in prison or local jail per 100,000 U.S. adult residents ^c	U.S. adult residents incarcerated in prison or local jail
2000	3,060	1 in 33	2,160	1 in 46	920	1 in 109
2005	3,160	1 in 32	2,210	1 in 45	990	1 in 101
2006	3,190	1 in 31	2,230	1 in 45	1,000	1 in 100
2007	3,210	1 in 31	2,240	1 in 45	1,000	1 in 100
2008	3,160	1 in 32	2,200	1 in 45	1,000	1 in 100
2009	3,100	1 in 32	2,150	1 in 47	980	1 in 102
2010	3,000	1 in 33	2,070	1 in 48	960	1 in 104
2011	2,930	1 in 34	2,010	1 in 50	940	1 in 106
2012	2,870	1 in 35	1,980	1 in 50	920	1 in 108
2013	2,830	1 in 35	1,950	1 in 51	910	1 in 110

Note: Rates were estimated to the nearest 10. Estimates may not be comparable to previously published BJS reports due to updated information or rounding.

^aIncludes offenders in the community under the authority of probation or parole agencies, under the jurisdiction of state or federal prisons, or held in local jails.

^bIncludes inmates under the jurisdiction of state or federal prisons or held in local jails.

^cRates were computed using the U.S. adult resident population estimates from the U.S. Census Bureau for January 1 of the following year.

Source: Adult correctional population estimates are based on the Bureau of Justice Statistics, Annual Surveys of Probation and Parole, Annual Survey of Jails, Census of Jail Inmates, and National Prisoner Statistics Program, 2000, 2005–2013. The adult resident population estimates are based on the U.S. Census Bureau, National Intercensal Estimates, 2000, and 2005–2012, and unpublished adult resident population estimates on January 1, 2013 and January 1, 2014.

TABLE 3
Estimated number of persons supervised by adult correctional systems, by correctional status, 2010 and 2013

Correctional populations	2010		2013	
	Population	Percent of total population	Population	Percent of total population
Total ^a	7,088,500	100%	6,899,000	100%
Probation ^b	4,055,500	57.2	3,910,600	56.7
Parole ^b	840,700	11.9	853,200	12.4
Prison ^b	1,613,800	22.8	1,574,700	22.8
Local jail ^c	748,700	10.6	731,200	10.6
Offenders with multiple correctional statuses ^d	170,300	:	170,800	:

Note: Counts were rounded to the nearest 100 and include estimates for nonresponding jurisdictions. Detail may not sum to total due to rounding and because offenders with multiple correctional statuses were excluded from the total correctional population. See *Methodology*.

:Not calculated.

^aTotal was adjusted to account for offenders with multiple correctional statuses. See *Methodology*.

^bPopulation as of December 31.

^cPopulation as of the last weekday in June.

^dSome probationers and parolees on December 31 were held in a prison or jail but still remained under the jurisdiction of a probation or parole agency, and some parolees were also on probation. In addition, some prisoners were held in jail. They were excluded from the total correctional population to avoid double counting. See table 6 and *Methodology*.

Sources: Bureau of Justice Statistics, Annual Surveys of Probation and Parole, Annual Survey of Jails, and National Prisoner Statistics Program, 2010 and 2013.

Between yearend 2012 and 2013, decreases in the probation and local jail populations led to the overall decline in the correctional population. Combined, the probation and jail populations fell by 45,400 offenders during 2013 (table 4). The decline in the probation population accounted for 71% (down 32,100) of the total decrease in the correctional population, as the probation population represented

the largest share of offenders under correctional supervision. The local jail population also decreased during 2013, accounting for 29% (down 13,300) of the total decline in the correctional population. Increases in the prison (up 4,300 prisoners) and parole (up 2,100 parolees) populations slightly offset the overall decrease in the correctional population during the year.

Since 2010, the probation, prison, and jail populations declined by a total of 201,500 offenders, with the probation population accounting for the majority (72%) of the decline. The parole population was the only correctional population to increase since 2010 (up 12,500), partially offsetting the overall decline in the correctional population over the 3-year period.

TABLE 4
Change in the number of persons supervised by adult correctional systems, 2010 and 2013

	2010		2013		2010–2013			
	Change in number	Percent of total change	Change in number	Percent of total change	Change in number	Percent of total change		
Total change^a	-148,600	100%	Total change^a	-41,500	100%	Total change^a	-189,500	100%
Total increase	16,600	100%	Total increase	6,400	100%	Total increase	12,500	100%
Parole	16,600	100	Parole	4,300	67.2	Parole	12,500	100
Total decrease	-163,000	100%	Total decrease	-45,400	100%	Total decrease	-201,500	100%
Probation	-142,600	87.5	Probation	-32,100	70.7	Probation	-144,900	71.9
Local jail	-18,700	11.5	Local jail	-13,300	29.3	Local jail	-17,500	8.7
Prison	-1,700	1.0						
Offenders with multiple correctional statuses^b	2,200	:	Offenders with multiple correctional statuses^b	2,500	:	Offenders with multiple correctional statuses^b	600	:

Note: Estimates were rounded to the nearest 100 and include estimates for nonresponding jurisdictions. Detail may not sum to total due to rounding. See *Methodology*.

: Not calculated.

^aTotal change includes the change in the number of offenders with multiple correctional statuses. See table 6 and *Methodology*.

^bSome probationers and parolees on December 31 were held in a prison or jail but still remained under the jurisdiction of a probation or parole agency, and some parolees were also on probation. In addition, some prisoners were held in jail. They were excluded from the total correctional population to avoid double counting. See table 6 and *Methodology*.

Sources: Bureau of Justice Statistics, Annual Surveys of Probation and Parole, Annual Survey of Jails, and National Prisoner Statistics Program, 2010 and 2013.

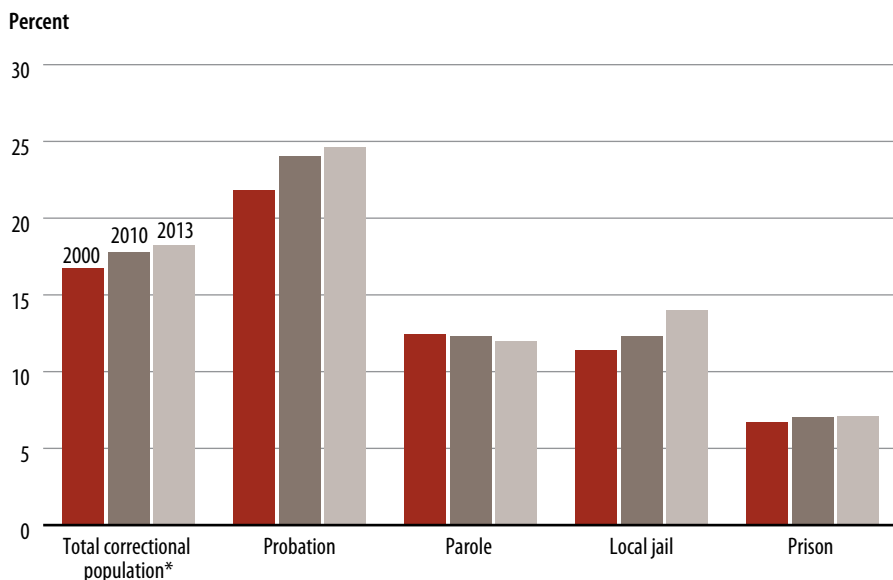
Since 2000, the proportion of females on probation and in jail increased; the proportion of females in prison and on parole remained stable

At yearend 2013 (18%), females represented a slightly larger share of the total correctional population than in 2000 (17%) (figure 3). The small increase was associated with an increase in the percentages of females supervised on probation and incarcerated in local jails. In 2013, females accounted for almost 25% of the probation population, up from about 22% in 2000. Similarly, females represented a larger share of the local jail population in 2013 (14%) compared to 2000 (11%). The percentage of females on parole or incarcerated in state or federal prison remained unchanged between 2000 and 2013.

Female jail, prison, and probation populations grew at a faster rate than the male populations between 2000 and 2010

The number of both males and females under correctional supervision increased between 2000 and 2010. An estimated 1,264,100 females were supervised by adult correctional systems at yearend 2010, up from about 1,078,400 at yearend 2000 (table 5). The number of males under correctional supervision reached approximately

FIGURE 3
Percent of females supervised by adult correctional systems, by correctional status, 2000, 2010, and 2013



Note: Estimates of probationers, parolees, and prisoners are for December 31; estimates of local jail inmates are for the last weekday of June. Includes estimates for nonresponding jurisdictions. See *Methodology*.

*Total was adjusted to account for offenders with multiple correctional statuses. See *Methodology*.

Source: Bureau of Justice Statistics, Annual Surveys of Probation and Parole, Annual Survey of Jails, and National Prisoner Statistics Program, 2000, 2010, and 2013.

5,824,400 by yearend 2010, up from 5,389,600 at yearend 2000. However, on average, females (up 1.6%) under correctional supervision grew at an annual rate that was twice the annual growth rate for males (up 0.8%) during the period.

While the number of males and females increased for all correctional populations between 2000 and 2010, the growth in females was faster than the growth in males for all populations except parolees. The male (1.5%) and female (1.4%) parole populations

TABLE 5
Estimated number of persons supervised by adult correctional systems and change in the population, by sex and correctional status, 2000, 2010, and 2013

	Total correctional population*		Probation		Parole		Local jail		Prison	
	Males	Females	Males	Females	Males	Females	Males	Females	Males	Females
2000	5,389,600	1,078,400	3,003,300	836,200	635,800	89,700	550,200	71,000	1,301,000	93,200
2010	5,824,400	1,264,100	3,081,000	974,500	737,300	103,400	656,400	92,400	1,500,900	112,900
2013	5,642,700	1,256,300	2,948,500	962,100	751,000	102,200	628,900	102,400	1,463,500	111,300
Percent change, 2000-2010										
Total	8.1%	17.2%	2.6%	16.5%	16.0%	15.3%	19.3%	30.1%	15.4%	21.1%
Average annual	0.8	1.6	0.3	1.5	1.5	1.4	1.8	2.6	1.4	1.9
Percent change, 2010-2013										
Total	-3.1%	-0.6%	-4.3%	-1.3%	1.9%	-1.2%	-4.2%	10.8%	-2.5%	-1.4%
Average annual	-1.1	-0.2	-1.5	-0.4	0.6	-0.4	-1.4	3.4	-0.8	-0.5

Note: Estimates of probationers, parolees, and prisoners are for December 31; estimates of local jail inmates are for the last weekday in June. Counts were rounded to nearest 100 and include estimates for nonresponding jurisdictions. Detail may not sum to total due rounding and adjustments made to account for persons with multiple correctional statuses. See *Methodology*.

*Total was adjusted to account for offenders with multiple correctional statuses. See *Methodology*.

Source: Bureau of Justice Statistics, Annual Surveys of Probation and Parole, Annual Survey of Jails, and National Prisoner Statistics Program, 2000, 2010, and 2013.

increased at about the same rate each year on average. Among both males and females, the local jail population was the fastest growing correctional population between 2000 and 2010. However, on average, the female jail population (up 2.6%) grew at a faster rate annually than the male jail population (up 1.8%).

The number of females under the jurisdiction of state or federal prisons grew by 21% between 2000 and 2010, compared to about a 15% increase in the number of male prisoners. Consequently, the growth in the female prison population (up 1.9% on average annually) was slightly faster than the growth in the male prison population (up 1.4%) during the period. Between 2000 and 2010, the female probation population increased by 17%, or an average of 1.5% annually. In comparison, the male probation population grew by 2.6%, or an average rate of growth (up 0.3% per year) that was about a fifth the growth rate of female probationers.

Since 2010, female jail inmates increased 11% and male parolees increased 2%; all other correctional populations declined

The decrease in both male and female correctional populations was consistent with the decline in the total number of persons supervised by adult correctional systems since 2010. However, while the number of males under correctional supervision declined by about 3.1% since 2010, the female correctional population (down 0.6%) decreased by less than 1%. Compared to males (down 1.1%), the average annual rate of decline in the female correctional population (down 0.2%) was considerably slower.

The number of males and females decreased across all correctional populations between 2010 and 2013, except for female jail inmates (up 11%) and male parolees (up 2%). Since 2010, the female jail population increased by an average annual rate of 3.4%.

Methodology

Sources of data

The statistics presented in this report include data from various Bureau of Justice Statistics (BJS) data collections, each relying on the voluntary participation of federal, state, and local respondents. For more information about any of the following data collections, go to the Data Collections page www.bjs.gov.

Annual Surveys of Probation and Parole. The Annual Surveys of Probation and Parole (ASPP) began in 1980. They collect data from probation and parole agencies in the United States that supervise adults. Both surveys cover the 50 states, the District of Columbia, and the federal system. BJS defines probation as a court-ordered period of correctional supervision in the community, generally as an alternative to incarceration. In some cases, probation can be a combined sentence of incarceration followed by a period of community supervision. Parole is defined as a period of conditional supervised release in the community following a prison term. It includes parolees released through discretionary or mandatory supervised release from prison, those released through other types of post-custody conditional supervision, and those sentenced to a term of supervised release.

In these data, adults are persons who are subject to the jurisdiction of an adult court or correctional agency. Persons age 17 or younger who were prosecuted in criminal court as if they were adults are considered adults, but persons age 17 or younger who were under the jurisdiction of a juvenile court or agency are excluded.

Annual Survey of Jails. The Annual Survey of Jails (ASJ) has collected data from a nationally representative sample of local jails each year since 1982, except in 1983, 1988, 1993, 1999, and 2005, when a complete census of U.S. local jails was conducted. Jails are confinement facilities, usually administered by a local law enforcement agency, that are intended to hold

adults, but they may also hold youth age 17 or younger before or after they are adjudicated. The ASJ data used in this report include inmates age 17 or younger who were held either before or after they were adjudicated (about 4,600 persons in 2013).

To maintain the jail series in this report, all tables and figures include 2013 national estimates of the local jail population as of the last weekday in June that were provided through the ASJ, except appendix table 1. In 2013, BJS conducted another census of jails through an existing collection titled the Deaths in Custody Reporting Program. BJS relied on local jail counts provided for December 31 through the 2013 census to generate jurisdiction-level estimates of the total incarcerated population and total correctional population that appear in appendix table 1. (ASJ is designed to provide only national estimates.) Because appendix table 1 includes the 2013 local jail estimates as of December 31, the totals of the correctional and incarcerated populations reported in appendix table 1 are not consistent with the totals of the populations reported in the other tables and figures of this report. (See *Census of Jails and Deaths in Custody Reporting Program*.)

Census of Jails. The Census of Jails began in 1970 and was conducted in 1972, 1978, 1983, 1988, 1993, 1999, 2005, and 2006. In 2013, BJS expanded the 2013 Deaths in Custody Reporting Program—Annual Summary on Inmates under Jail Jurisdiction to act as the 2013 Census of Jails. The census is part of a series of data collection efforts, including the Census of Jail Inmates and the Census of Jail Facilities, aimed at studying the nation's jails and their inmate populations.

Deaths in Custody Reporting Program. The Deaths in Custody Reporting Program (DCRP) is an annual collection that provides national, state, and incident-level data on persons who died while in the physical custody of the 50 state departments of corrections or the approximately 2,800 local adult jail jurisdictions nationwide.

The DCRP began in 2000 under the Death in Custody Reporting Act of 2000 (P.L. 106-297), and it is the only national statistical collection to obtain comprehensive information about deaths in adult correctional facilities. In addition to the death count, BJS requests that jails provide summary statistics about their population and admissions. All jails, including those with no deaths to report (which includes about 80% of jails in any given year), are asked to complete the annual summary survey form.

National Prisoner Statistics Program. The National Prisoner Statistics (NPS) program began in 1926 under a mandate from Congress and has been conducted annually. It collects data from the nation's state departments of corrections and the Federal Bureau of Prisons (BOP).

The NPS distinguishes between inmates in custody and prisoners under jurisdiction of correctional authorities. To have custody of a prisoner, a state or the BOP must hold that inmate in one of its facilities. To have jurisdiction over a prisoner, the state or BOP must have legal authority over that prisoner, regardless of where the prisoner is incarcerated or supervised. Some states were unable to provide counts that distinguish between custody and jurisdiction.⁶

With the exception of appendix table 2, the NPS counts in all tables and figures of this report are consistent with the jurisdiction counts and findings reported in *Prisoners in 2013*, (NCJ 247282, BJS web, September 2014). The jurisdiction counts represent BJS's official measure of the prison population and include persons held in prisons, penitentiaries, correctional facilities, halfway houses, boot camps, farms, training or treatment centers, and hospitals. They also include prisoners who were temporarily absent (fewer than 30 days), in court, or on work release; housed in privately operated facilities, local jails, or other

state or federal facilities; and serving concurrent sentences for more than one correctional authority.

The NPS custody counts are reported in appendix table 2 and include all inmates held within state and federal facilities, including inmates housed for other correctional facilities, prisoners held in privately operated facilities, prisoners age 17 or younger who were serving time in a state or federal correctional facility after being sentenced in criminal court as if they were adults (1,200 persons in 2013), and inmates in the 6 states in which prisons and jails form one integrated system, including inmates age 17 or younger who may have been held before or after adjudication.

In 1995, BJS began collecting yearend counts of inmates from the departments of corrections in the U.S. territories (American Samoa, Guam, and the U.S. Virgin Islands) and U.S. commonwealths (Northern Mariana Islands and Puerto Rico). These data are only included in appendix table 3 of this report and represent all inmates under the jurisdiction or legal authority of prison facilities in the U.S. territories or commonwealths.

Survey of Jails in Indian Country.

The Annual Survey of Jails in Indian Country (SJIC) has been conducted annually since 1998, except in 2005 and 2006. The SJIC collects detailed information on all adult and juvenile confinement facilities, detention centers, jails, and other facilities operated by tribal authorities or the U.S. Department of the Interior's Bureau of Indian Affairs. These data are included in appendix table 3 of this report.

Counts adjusted for offenders with multiple correctional statuses

Offenders under correctional supervision may have multiple correctional statuses for several reasons. For example, probation and parole agencies may not always be notified immediately of new arrests, jail admissions, or prison admissions; absconders included in a probation or parole agency's population in one

jurisdiction may actually be incarcerated in another jurisdiction; persons may be admitted to jail or prison before formal revocation hearings and potential discharge by a probation or parole agency; and persons may be serving separate probation and parole sentences concurrently. In addition, state and federal prisons may hold inmates in county facilities or local jails to reduce crowding in their prisons.

In 1998, through the ASPP, BJS began collecting data on the number of probationers and parolees with multiple correctional statuses and has since expanded on the information collected. In 1999, through the NPS, BJS began collecting data on the number of prisoners under the jurisdiction of state or federal prisons that were held in county facilities or local jails. Table 6 includes adjustments that were made to the total correctional population, total community supervision population, and total incarcerated population estimates presented in this report to exclude offenders with multiple correctional statuses to avoid double counting offenders.

The estimates from the ASPP are based on data reported by the probation and parole agencies that were able to provide the information within the specific reporting year. Because some probation and parole agencies did not provide these data each year, the numbers may underestimate the total number of offenders who had multiple correctional statuses between 2000 and 2013. Due to these adjustments, the sum of correctional statuses in tables 1, 2, 3, 4, 5 and appendix table 1 will not equal the total correctional population. In addition, the sum of the probation and parole populations for 2008 through 2013 will not yield the total community supervision population because the total was adjusted for parolees who were also on probation.

In addition, the sum of the prison and local jail populations for 2000 through 2013 will not equal the total incarcerated population because prisoners held in local jails were excluded from the total.

⁶See *Jurisdiction notes in Prisoners in 2013*, (NCJ 247282, BJS web, September 2014) to determine which states did not distinguish between custody and jurisdiction counts.

Decomposing the decline in the correctional supervision rate

To decompose the decline in the correctional supervision rate discussed in this report, the following formula was used:

$$\begin{aligned} \Delta R &= [P1 * (1/GP1)] - [P0 * (1/GP0)] \\ &= [P1 * ((1/GP1) - (1/GP0))] + [(1/GP0) * (P1 - P0)] \\ &= [(1/GP1) * (P1 - P0)] + [P0 * ((1/GP1) - (1/GP0))] \end{aligned}$$

In this formula, ΔR is the change in the correctional supervision rate, P1 is the total correctional population for the most recent year, P0 is the total correctional population for the earlier year, GP1 is the U.S. adult resident population for the most recent year, and GP0 is the U.S. adult resident population for the earlier year. The components $[(1/GP0) * (P1 - P0)]$ and $[(1/GP1) * (P1 - P0)]$ provided the change in the correctional supervision rate due to the change in the total correctional population. These two components were summed, and the average was used to estimate the amount of change in the correctional supervision rate attributed to the change in the total correctional population during that period.

The components $[P1 * ((1/GP1) - (1/GP0))]$ and $[P0 * ((1/GP1) - (1/GP0))]$ provided the change due to the U.S. adult resident population. These two components were summed, and the average was used to estimate the amount of change in the correctional supervision rate attributed to the change in the U.S. adult resident population during the period.

Adjustments for nonresponse

Probation, parole, jail, and prison population counts were adjusted to account for nonresponse across the data collections. The methods varied and depended on the type of collection, type of respondent, and availability of information. For more information for 2013, see the following reports: *Jail Inmates at Midyear 2013 - Statistical Tables*, NCJ 245350, BJS web, May 2014, *Prisoners in 2013*, NCJ 247282, BJS web, September 2014, and *Probation and Parole in the United States, 2013*, NCJ 248029, BJS web, October 2014.

The local jail population counts that were collected through the 2013 Census of Jails to produce the jurisdiction-level estimates that are reported in appendix table 1 were adjusted for unit and item nonresponse. Nonresponse in the

2013 jail census was minimal as the unit response rate was 92.4% and the item response rate for the December 31, 2013, population total was 99.7%. For jails that did not participate in the census or were unable to provide the 2013 yearend count, a sequential hot deck imputation procedure was used to impute values. This procedure used respondent (donor) data as a substitute for missing values. The donor for each nonrespondent was randomly selected from within a set of similar jails, which was sorted by the previous year population value. The resulting imputed values are generally similar to previous year reported values, but are not identical due to differences between each donor and nonrespondent pair and the year-to-year fluctuation in donor population values.

The total number of prisoners under the jurisdiction of correctional authorities in the U.S. territories and commonwealths in 2012 and 2013 includes estimates for nonresponse (see appendix table 3). Guam did not provide any data in 2012; therefore, Guam's prison population for 2012 was estimated as the average of its 2011 and 2013 populations, and this estimate was included in the U.S. total for

TABLE 6
Estimated number of offenders with multiple correctional statuses at yearend, by correctional status, 2000–2013

Year	Total	Prisoners held in local jail	Probationers in—		Parolees in—		
			Local jail	State or federal prison	Local jail	In state or federal prison	On probation
2000	112,500	70,000	20,400	22,100	:	:	:
2001	116,100	72,500	23,400	20,200	:	:	:
2002	122,800	72,600	29,300	20,900	:	:	:
2003	120,400	73,400	25,500	21,500	:	:	:
2004	130,400	74,400	34,400	21,600	:	:	:
2005	164,500	73,100	32,600	22,100	18,300	18,400	:
2006	169,900	77,900	33,900	21,700	20,700	15,700	:
2007	156,400	80,600	19,300	23,100	18,800	14,600	:
2008	178,500	83,500	23,800	32,400	19,300	15,600	3,900
2009	168,100	85,200	21,400	23,100	19,100	14,300	5,000
2010	170,300	83,400	21,300	21,500	21,400	14,400	8,300
2011	169,300	82,100	21,100	22,300	18,000	14,900	11,000
2012	168,200	83,500	21,200	21,600	18,500	10,700	12,700
2013	170,800	85,600	22,400	16,700	21,800	11,800	12,500

Note: Estimates were rounded to the nearest 100 and may not be comparable to previously published BJS reports due to updated information. Detail may not sum to total due to rounding.

: Not collected or excluded from total correctional population.

Source: Bureau of Justice Statistics, Annual Surveys of Probation and Parole, and National Prisoner Statistics Program, 2000–2013.

2012. The U.S. Virgin Islands provided inconsistent data in 2013, Puerto Rico provided only partial data (about 4,800 prisoners under their jurisdiction), and American Samoa did not provide any data in 2013. Because of limited information, the U.S. Virgin Islands' and Puerto Rico's prison populations in 2012 were used to impute their 2013 populations and the estimates were included in the U.S. total for 2013. American Samoa provided data in 2011; therefore, its prison population in 2011 was used to impute the prison population in 2012 and 2013. These estimates were included in the U.S. totals for 2012 and 2013. In addition, the Northern Mariana Islands reported only the number of inmates in the custody of their facilities in 2013, not the number of inmates under their legal jurisdiction. The custody prison population was used as an estimate of the number of prisoners under their jurisdiction, as the two populations have been equal in prior collection years. This estimate was included in the U.S. total for 2013.

Estimates of males and females under correctional supervision

The number of males and the number of females on probation or parole were adjusted to account for nonresponse using a ratio adjustment method. For jurisdictions that did not provide data on sex for a portion of their population, the sex distribution of the known portion of the population was used to impute for the unknown portion because it was assumed that the distributions were the same. For states that were unable to provide any data on sex, the state national average was used to impute the number of males and females supervised in those

states. Adjusted jurisdiction totals were then aggregated to produce national estimates of the number of males and females on probation and parole.

The number of prisoners by sex represents the reported number of males and females under the jurisdiction of state or federal prisons within the reference year. The number of local jail inmates by sex represents the adjusted number of males and females in the custody of local jails within the reference year. (For details describing nonresponse adjustments for characteristics of the local jail population, see *Jail Inmates at Midyear 2013 - Statistical Tables*, NCJ 245350, BJS web, May 2014.)

To generate estimates of the total correctional population by sex for 2000, 2010, and 2013, the numbers of males and females for all four correctional statuses were aggregated, and the totals were adjusted using ratio estimation to account for male and female offenders with multiple correctional statuses. These adjustments were made by correctional status.

To estimate the number of male and female prisoners held in local jail, the distribution of the prison population by sex within the reference year was applied to the total number of prisoners in local jails. The estimated number of female prisoners held in local jails was then subtracted from the total number of females under correctional supervision. This same method was used to adjust the number of males under correctional supervision.

To estimate the number of males and females on parole who were also on probation in 2010 and 2013, the

distribution of the parole population by sex within the reference year was applied to the total number of parolees on probation. The estimated number of males with dual community supervision statuses was then subtracted from the total number of males under correctional supervision. This same method was used to adjust the number of females under correctional supervision.

For 2000, 2010, and 2013, the total correctional population estimates were adjusted to account for the number of males and females on probation who were held in prisons or local jails and the number of males and females on parole who were held in prisons or local jails. The distribution of the local jail population by sex was applied to the total number of probationers in local jails within the reference year to estimate the number of males and females with both correctional statuses. In addition, the distribution of the prison population by sex was applied to the total number of probationers in prison within the reference year to estimate the number of males and females with both correctional statuses. The estimated number of male probationers in prisons and local jails was then subtracted from the total number of males under correctional supervision within the reference year, and this same method was used to adjust the number of females under correctional supervision. This method was also employed to account for parolees in prisons or local jails, and the totals, by sex, were excluded from the number of males and females under correctional supervision.

APPENDIX TABLE 1**Estimated number and rate of persons supervised by adult correctional systems, by jurisdiction and correctional status, 2013**

Jurisdiction	Total correctional population, 12/31/2013 ^a	Correctional supervision rate per 100,000 adults ^b	Community supervision		Incarcerated	
			Number on probation or parole, 12/31/2013 ^c	Community supervision rate per 100,000 adults ^b	Number in prison or local jail, 12/31/2013 ^d	Incarceration rate per 100,000 adults ^b
U.S. total^e	6,906,200	2,830	4,751,400	1,950	2,227,500	910
Federal^f	347,000	140	131,900	50	215,100	90
State	6,559,200	2,690	4,619,400	1,900	2,012,400	830
Alabama	115,600	3,100	70,800	1,900	46,000	1,230
Alaska	14,600	2,670	9,500	1,730	5,100	940
Arizona	132,300	2,620	79,200	1,570	55,200	1,090
Arkansas	69,900	3,100	50,200	2,220	22,800	1,010
California	600,400	2,050	381,600	1,300	218,800	750
Colorado	120,700	2,970	89,700	2,210	32,100	790
Connecticut	62,900	2,230	45,400	1,610	17,600	620
Delaware	23,700	3,260	16,700	2,300	7,000	960
District of Columbia	13,700	2,540	12,600	2,330	2,400	450
Florida	389,400	2,490	237,800	1,520	154,500	990
Georgia	624,200	8,290	536,200	7,120	91,600	1,220
Hawaii	28,900	2,630	23,300	2,120	5,600	510
Idaho	45,500	3,820	35,200	2,960	10,200	860
Illinois	222,700	2,250	153,400	1,550	69,300	700
Indiana	179,400	3,580	134,000	2,680	45,400	910
Iowa	45,900	1,930	34,700	1,460	12,700	530
Kansas	37,100	1,710	20,500	940	16,600	760
Kentucky	97,600	2,880	65,900	1,940	32,100	950
Louisiana	115,700	3,280	70,700	2,010	50,100	1,420
Maine	10,500	980	6,700	630	3,800	350
Maryland	74,800	1,620	46,300	1,010	32,700	710
Massachusetts	91,100	1,710	70,000	1,310	21,400	400
Michigan	253,700	3,310	195,200	2,550	60,200	790
Minnesota	123,500	2,970	107,800	2,590	15,700	380
Mississippi	67,400	2,980	38,600	1,710	28,800	1,270
Missouri	114,900	2,460	70,400	1,510	44,500	950
Montana	14,800	1,870	9,500	1,190	6,000	760
Nebraska	23,200	1,640	14,800	1,050	8,500	600
Nevada	37,500	1,750	17,600	820	19,900	930
New Hampshire	11,100	1,050	6,300	590	4,800	460
New Jersey	164,100	2,380	128,100	1,860	37,600	540
New Mexico	34,200	2,170	18,700	1,180	15,500	980
New York	228,100	1,470	151,400	980	81,400	530
North Carolina	156,000	2,050	100,600	1,320	55,300	730
North Dakota	8,100	1,430	5,500	960	2,700	470
Ohio	335,500	3,750	267,400	2,990	69,800	780
Oklahoma ^g	67,700	2,320	**	**	37,900	1,300
Oregon	84,100	2,720	61,100	1,980	22,900	740
Pennsylvania	355,600	3,530	275,800	2,730	85,500	850
Rhode Island	24,600	2,930	23,400	2,790	3,400	400
South Carolina	73,500	1,980	40,900	1,100	32,600	880
South Dakota	14,800	2,310	9,500	1,490	5,300	820
Tennessee	122,500	2,440	77,900	1,550	48,100	960
Texas	711,900	3,640	508,000	2,600	221,800	1,130
Utah	25,200	1,250	14,500	720	12,500	620
Vermont	8,600	1,710	6,900	1,370	2,100	410
Virginia	114,600	1,780	55,800	870	58,800	910
Washington	139,200	2,570	111,100	2,060	29,700	550

Continued on next page

APPENDIX TABLE 1 (continued)

Estimated number and rate of persons supervised by adult correctional systems, by jurisdiction and correctional status, 2013

Jurisdiction	Total correctional population, 12/31/2013 ^a	Correctional supervision rate per 100,000 adults ^b	Community supervision		Incarcerated	
			Number on probation or parole, 12/31/2013 ^c	Community supervision rate per 100,000 adults ^b	Number in prison or local jail, 12/31/2013 ^d	Incarceration rate per 100,000 adults ^b
West Virginia	20,500	1,390	11,000	750	9,700	660
Wisconsin	98,100	2,200	65,300	1,470	34,800	780
Wyoming	9,700	2,180	6,000	1,340	3,800	840

Note: Counts were rounded to the nearest 100, and rates were rounded to the nearest 10. Detail may not sum to total due to rounding and because offenders with multiple correctional statuses were excluded from the totals. Counts include estimates for nonresponding jurisdictions. See *Methodology*.

**Unknown.

^aExcludes, by jurisdiction, an estimated 85,600 prisoners held in jail, 16,700 probationers in prison, 22,400 probationers in jail, 21,800 parolees in jail, 11,800 parolees in prison, and 12,500 parolees on probation. See table 6.

^bRates were computed using the U.S. adult state resident population on January 1, 2014.

^cExcludes, by jurisdiction, an estimated 12,500 parolees on probation.

^dExcludes, by jurisdiction, an estimated 85,600 prisoners held in local jails. Local jail counts by jurisdiction are based on December 31, 2013. For this reason, the estimates in this table differ from the local jail estimates in the other tables and figures of this report. See *Methodology*.

^eTotal correctional population and total number in prison and jail include local jail counts that are based on December 31, 2013, to produce jurisdiction-level estimates. For this reason, the estimates in this table differ from other estimates in this report. See *Methodology*.

^fExcludes about 11,900 inmates that were held in facilities that were operated by the Federal Bureau of Prisons and functioned as jails.

^gThe Oklahoma state probation agency could not provide the December 31 probation population. The total correctional population includes an estimate of the community supervision population in Oklahoma, including an estimate of the Oklahoma state agency's probation population. See *Methodology*.

Sources: Bureau of Justice Statistics, Annual Surveys of Probation and Parole, Deaths in Custody Reporting Program - Annual Summary on Inmates under Jail Jurisdiction, and National Prisoner Statistics Program, 2013. The adult resident population estimates are based on unpublished U.S. adult state resident populations on January 1, 2014.

APPENDIX TABLE 2

Inmates held in custody in state or federal prisons or in local jails, 2000 and 2012–2013

Inmates in custody	Number of inmates			Average annual change, 2000–2012	Percent change, 2012–2013
	2000	2012	2013		
Total	1,938,500	2,228,400	2,217,000	1.2%	-0.5%
Federal prisoners^a	140,100	216,900	215,000	3.6%	-0.9%
Prisons	133,900	208,000	205,700	3.7	-1.1
Federal facilities	124,500	176,500	173,800	2.9	-1.5
Privately operated facilities	9,400	31,500	31,900	10.1	1.3
Community corrections centers ^b	6,100	8,900	9,300	3.1	4.5
State prisoners	1,177,200	1,267,000	1,270,800	0.6%	0.3%
State facilities	1,101,200	1,170,200	1,178,700	0.5	0.7
Privately operated facilities	76,100	96,800	92,100	2.0	-4.9
Local jails	621,100	744,500	731,200	1.5%	-1.8%
Incarceration rate^c	680	710	700	0.4%	-1.4%
Adult incarceration rate ^d	920	920	910	0.0	-1.1

Note: Estimates may not be comparable to previously published BJS reports due to updated information. Counts were rounded to the nearest 100 and include estimates for nonresponding jurisdictions. Rates were rounded to the nearest 10. Details may not sum to total due to rounding. Prison counts are for December 31; jail counts are for the last weekday in June. Total includes all inmates held in local jails, state or federal prisons, or privately operated facilities. It does not include inmates held in U.S. territories (appendix table 3), military facilities (appendix table 3), in U.S. Immigration and Customs Enforcement facilities, in jails in Indian country (appendix table 3), or in juvenile facilities. See *Methodology*.

^aAfter 2001, responsibility for sentenced prisoners from the District of Columbia was transferred to the Federal Bureau of Prisons.

^bNonsecure, privately operated community corrections centers.

^cThe total number in the custody of local jails, state or federal prisons, or privately operated facilities within the year per 100,000 U.S. residents. Resident population estimates are from the U.S. Census Bureau for January 1 of the following year.

^dThe total number in custody within the year per 100,000 U.S. residents age 18 or older. Adult resident population estimates are from the U.S. Census Bureau for January 1 of the following year.

Source: Bureau of Justice Statistics, Annual Survey of Jails, and National Prisoner Statistics Program, 2000 and 2012–2013. The total and adult resident population estimates are based on U.S. Census Bureau National Intercensal Estimates, 2001, and unpublished total and adult resident population estimates on January 1, 2013, and January 1, 2014.

APPENDIX TABLE 3

Estimated number of inmates incarcerated by other adult correctional systems, 2000, 2005, and 2012–2013

Other adult correctional systems	Number of inmates				Average annual change, 2000–2012	Percent change, 2012–2013
	2000	2005	2012	2013		
Total	20,400	19,800	17,600	17,700	-1.2%	0.6%
Territorial prisons ^a	16,200	15,800	13,800	14,000	-1.3	0.8
Military facilities ^b	2,400	2,300	1,400	1,400	-4.4	-1.0
Jails in Indian country ^c	1,800	1,700	2,400	2,300	2.4	-3.3

Note: Estimates were rounded to the nearest 100 and are for December 31. Total excludes inmates held in local jails, under the jurisdiction of state or federal prisons, in U.S. Immigration and Customs Enforcement facilities, or held in juvenile facilities.

^aThe 2012 and 2013 totals include population counts that were estimated for some territories due to nonresponse. See *Methodology*.

^bSee *Prisoners in 2013*, NCJ 247282, BJS web, September 2014.

^cPopulation counts are for the last weekday in June of each year. The 2005 population was estimated as the 2004 population count because the Survey of Jails in Indian Country was not conducted in 2005 or 2006. See *Jails in Indian Country, 2013*, NCJ 247017, BJS web, July 2014.

Source: Bureau of Justice Statistics, National Prisoner Statistics Program, and Survey of Jails in Indian Country, 2000, 2005, and 2012–2013.

APPENDIX TABLE 4

Estimated standard errors for local jail inmates, 2000 and 2010–2013

Year	Total	Standard error	Relative standard error (%) [*]
2000	621,100	2,550	0.41%
2010	748,700	5,640	0.75
2011	735,600	6,170	0.84
2012	744,500	7,680	1.03
2013	731,200	8,040	1.10

Note: Population estimates were rounded to the nearest 100. Standard errors were rounded to the nearest 10.

^{*}Calculated by dividing the standard error by the survey estimate and multiplying by 100.

Source: Bureau of Justice Statistics, Annual Survey of Jails, 2000 and 2010–2013.

APPENDIX TABLE 5

Estimated number of persons supervised by adult correctional systems, by correctional status, 2000–2013

Year	Total correctional population ^a	Community supervision			Incarcerated ^b		
		Total ^{a,c}	Probation	Parole	Total ^a	Local jail	Prison
2000	6,467,900	4,565,100	3,839,500	725,500	1,945,400	621,100	1,394,200
2001	6,585,000	4,665,900	3,934,700	731,100	1,962,800	631,200	1,404,000
2002	6,731,100	4,748,300	3,995,200	753,100	2,033,100	665,500	1,440,100
2003	6,887,000	4,847,500	4,074,000	773,500	2,086,500	691,300	1,468,600
2004	6,997,200	4,916,500	4,140,600	775,900	2,136,600	714,000	1,497,100
2005	7,055,800	4,946,800	4,162,500	784,400	2,200,400	747,500	1,525,900
2006	7,199,800	5,035,200	4,237,000	798,200	2,256,600	765,800	1,568,700
2007	7,339,900	5,119,300	4,293,200	826,100	2,296,400	780,200	1,596,800
2008	7,314,400	5,095,200	4,270,900	828,200	2,310,300	785,500	1,608,300
2009	7,237,100	5,017,900	4,198,200	824,100	2,297,700	767,400	1,615,500
2010	7,088,500	4,887,900	4,055,500	840,700	2,279,100	748,700	1,613,800
2011	6,990,400	4,814,200	3,971,300	853,900	2,252,500	735,600	1,599,000
2012	6,940,500	4,781,300	3,942,800	851,200	2,231,400	744,500	1,570,400
2013	6,899,000	4,751,400	3,910,600	853,200	2,220,300	731,200	1,574,700

Note: Estimates were rounded to the nearest 100 and may not be comparable to previously published BJS reports due to updated information or rounding. Counts include estimates for nonresponding jurisdictions. All probation, parole, and prison counts are for December 31; jail counts are for the last weekday in June. Detail may not sum to total due to rounding and adjustments made to account for offenders with multiple correctional statuses. See *Methodology*.

^aTotal was adjusted to account for offenders with multiple correctional statuses. See *Methodology*.

^bIncludes inmates held in local jails or under the jurisdiction of state or federal prisons.

^cIncludes some offenders held in a prison or jail but who remained under the jurisdiction of a probation or parole agency.

Source: Bureau of Justice Statistics, Annual Surveys of Probation and Parole, Annual Survey of Jails, Census of Jail Inmates, and National Prisoner Statistics Program, 2000–2013.



The Bureau of Justice Statistics, located in the Office of Justice Programs, U.S. Department of Justice, collects, analyses, and disseminates statistical information on crime, criminal offenders, victims of crime, and the operation of justice systems at all levels of government. William J. Sabol is acting director.

Lauren E. Glaze and Danielle Kaeble wrote this report. Danielle Kaeble and Lauren E. Glaze analyzed the data and prepared the tables and graphs. Margaret Noonan, Tracy Snell, and Jennifer Bronson provided statistical verification and review.

Irene Cooperman and Jill Thomas edited the report. Barbara Quinn produced the report.

December 2014, NCJ 248479

